



AQUACELETMExtraTM



REAL IMPACT

AQUACEL[®] Extra'sTM
innovative Hydrofiber[®]
helps you get real results
for your wound patients¹



REAL PROGRESS



AQUACEL® Extra™ helps you meet today's wound care challenges and do more for your patients:

- **Progressing** hard-to-heal wounds effectively²
- Improving **quality of life** for your patients²
- Managing an ever-increasing **caseload** – especially when Covid 19 adds to the pressure
- Keeping **costs** under control³

REAL INNOVATION PROVEN OVER TIME

AQUACEL® Extra™ powered by Hydrofiber® Technology is relied on by healthcare professionals and patients around the world. Here's why:



TOP RATED in 100+ published papers, including 30 randomised **CONTROLLED TRIALS**



PROVEN TO PROGRESS 88.1% of wounds towards healing in just 2 weeks²



Shown to **REDUCE COST** of care protocols³



PIONEERING performance: locks in exudate⁵, micro-contour to wound bed⁶, balances fluid⁷ and desloughs²

REAL EVIDENCE

In a 12-week study⁴ of 131 leg ulcer patients, AQUACEL is highly rated for **OVERALL PERFORMANCE** with significantly improved **WEAR TIME** and **COST EFFECTIVENESS**

REAL ADVANCES IN WOUND CARE TECHNOLOGY

AQUACEL® Extra's™ unique design adapts to wound conditions, creating the ideal environment for healing



100% CMC fibres

- Sustainably sourced and biodegradable⁹
- Malleable, soft and comfortable
- Easily cut to any size
- 7 days wear time



Hydrofiber® with cohesive gelling action

- Balances moisture for optimum wound-healing environment⁷
- Micro-contours to wound bed minimising the GAP for bacteria to proliferate⁶
- De-sloughs² wound bed
- Locks in exudate and bacteria helping minimise cross-infection⁵
- Locks in MMPs that may delay or compromise wound healing¹⁰
- Aids autolytic debridement¹³



High exudate management, minimising leakage even under compression⁸



Vertical wicking to draw fluid away from wound bed protecting periwound skin from maceration¹²

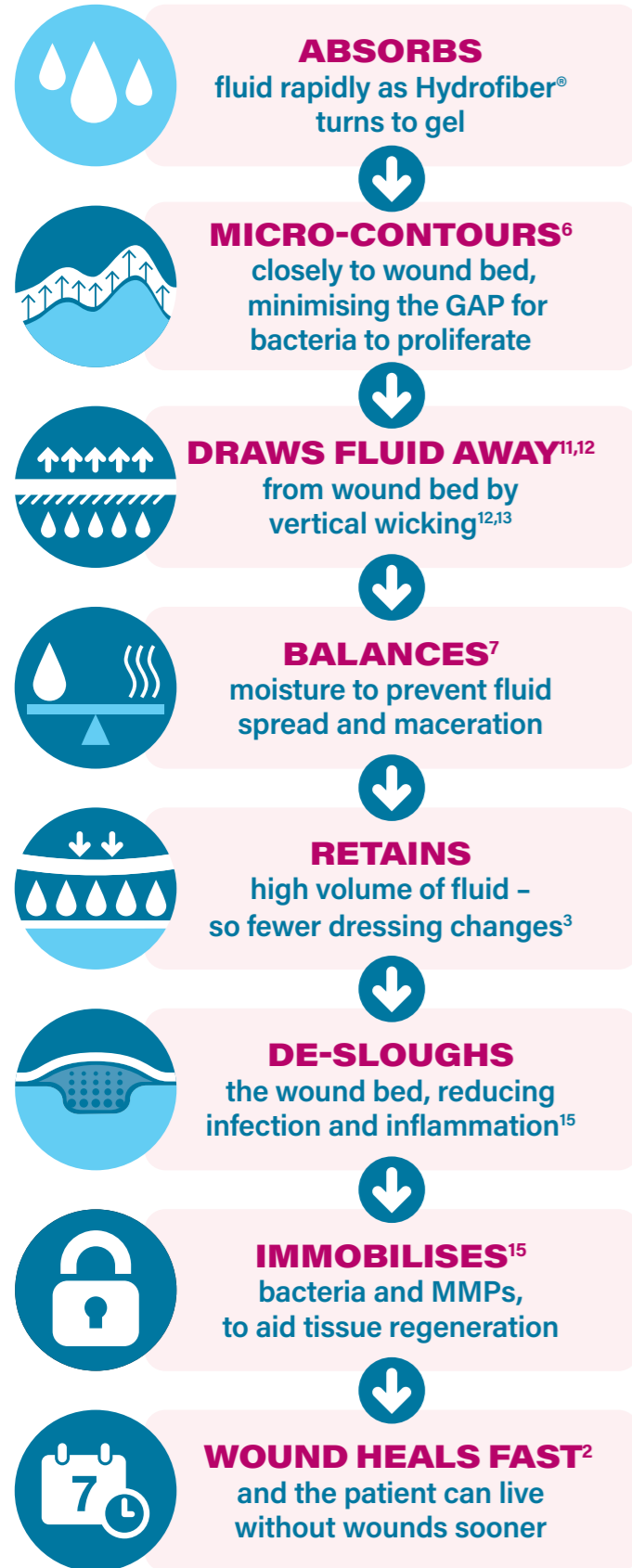


Stitch-bonded for greater strength for dressing integrity upon removal¹⁴



AQUACEL™ Extra™

How **AQUACEL® Extra™** with unique **Hydrofiber®** technology helps you make real progress with your patient's wound:



88.1%

of wounds shown to heal or improve within 14 days²

AQUACEL's fibres

IMMOBILISE BACTERIA

including pseudomonas and staphylococci, leading to passive infection control.¹⁵

REAL EVIDENCE

A study of 1,093 wound patients, all treated with AQUACEL® Extra™ dressings.

After just **14 DAYS**²:

REDUCED Wound size* (width, length and depth) 52.8% slough*

INCREASED 73.8% granulation† 96.6% epithelialized tissue‡

*p<0.001 †p=0.024 ‡p=0.047

REAL EVIDENCE

In a community setting survey of 1,093 patients treated with AQUACEL® Extra™ reported:

67.9%

of cases² showed improved **IMPROVED PERIWOUND** skin at day 7.

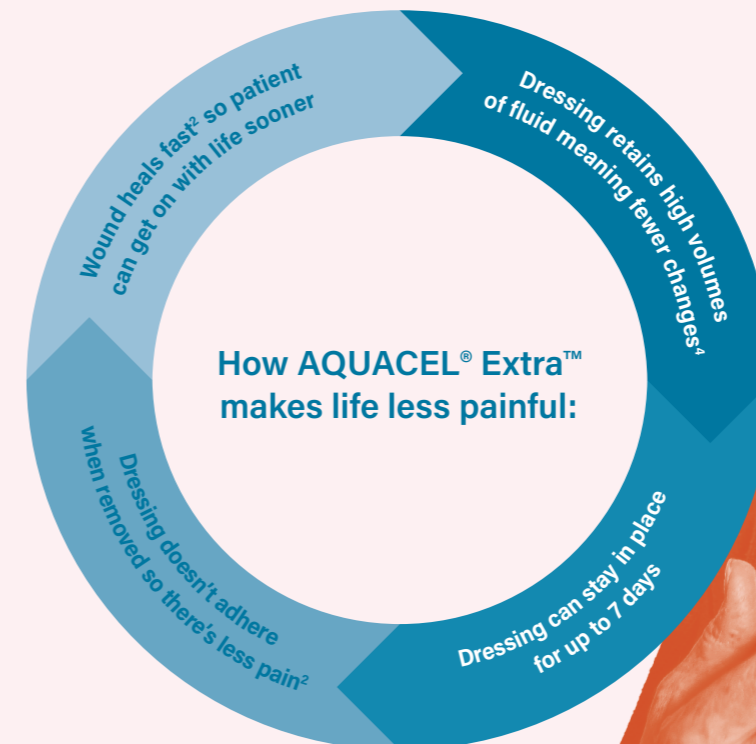
27%

REDUCTION IN PAIN (perceived) after **7 DAYS** of dressing wear.²

70%

with either acute or hard-to-heal wounds were **VERY SATISFIED** with feelings of less pain.²

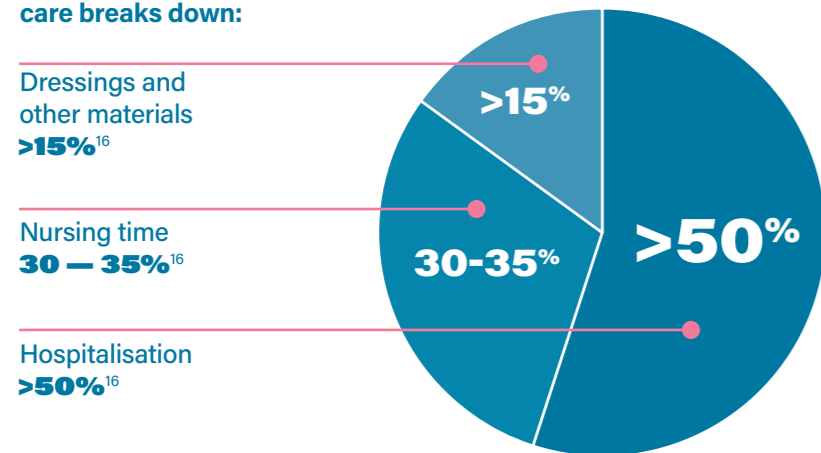
REAL QUALITY OF LIFE



REAL VALUE

AQUACEL® Extra™ can help you deliver real savings

How the cost of wound care breaks down:



AQUACEL® Extra™ is the solution

The main factors driving wound care costs are:	AQUACEL® Extra™ reduces all 3
1 The time it takes to heal wounds	• 79.4% of hard to heal and acute wounds healed or improved to healing in just 7 days ²
2 Frequency of dressing changes	• Great exudate management optimising dressing changes with periwound improvement in 72.8% ² of cases without maceration ¹²
3 Complications from infection and necrosis	• Passive infection control with bacterial sequestration and micro-contouring that minimises the gap ⁶

“Wound management has been estimated to account for **3%** of all healthcare expenditure.

Christina Lindholm & Richard Searle, International Wound Journal ISSN 1742-4801

”

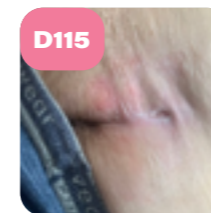
Burden of Wounds:

The mean cost of an unhealed wound was approximately **2.5 TIMES** more than that of a wound that healed during the study period.¹⁷

REAL EVIDENCE

In an average-sized health authority of 30,000 population, using a hydrofiber® dressing such as AQUACEL® Extra™ would **SAVE 100 BED DAYS PER YEAR** leading to a potential saving of £55,000.³

REAL-LIFE RESULTS



SACRAL PRESSURE ULCER

Subject aged over 70 years treated at home for a stage IV sacral pressure ulcer

Wound care objectives

- Promote autolytic debridement and granulation
- Reduce bacterial load
- Manage exudate
- Re-establish the integrity of the perilesional skin

Wound care protocol

- Cleaning with soap and water irrigation with natural saline solution (e.g. Irriclen®)
- AQUACEL® Extra™ 12.5 x 12.5 cm + AQUACEL® Foam Sacral Large
- Initial daily dressing changes for mechanical debridement

Wound condition on Day 0

- Heavily exuding deep wound
- Significant presence of necrotic tissue
- Fragile perilesional skin with a large area of skin erosion

Wound outcome

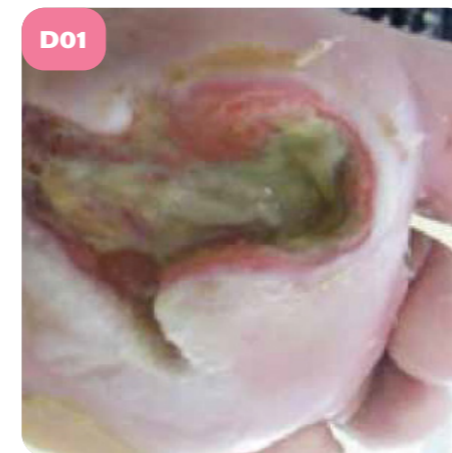
Assessment at D13:

- Significant improvement in the perilesional skin
- Debrided wound in granulation phase
- Excellent exudate management
- Dressing renewed every 2 days (due to the proximity of the anal margin)

Conclusion

Benefits observed:

- Apparently complete healing in less than 4 months
- Effective debridement facilitating mechanical debridement
- Good exudate management
- Healthy edges and perilesional skin



DIABETIC FOOT ULCER

Subject over 65 years of age with balanced DNID*, diabetic neuropathy, with plantar ulcer after surgical debridement.

* Non-insulin-dependent diabetes

Wound care objectives

- Offload pressure
- Probe the wound: check if any bone exposure, fistular tracking, undermined wound edges
- Manage risk of infection
- Promote healing and epithelialisation
- Improve the condition of the peri-wound skin
- Cleansing (e.g. Irriclen®)
- Mechanical debridement
- Retention bandage
- Therapeutic shoe for temporary use

Wound condition on Day 0

- Deep cavity wound with undermined edges
- Excessive exudate
- Sloughy wound bed
- Macerated peri-wound

Duration evolution of the wound

Evaluation on Day 10:

- Poor compliance with off loading
- Bone exposure
- Exudate levels high
- Presence of granulation keratosis at the wound edges
- Reduction of slough
- Epithelial budding evident

Conclusion

Benefits observed at 2 months:

- Very positive wound progression
- Signs of wound reduction
- Moderate exudate levels
- Relay by AQUACEL® Foam alone
- Presence of keratosis => sharp debridement necessary (or required)
- Continued education for compliance with offloading

Rely on AQUACEL® Extra™ to get real results for your patients



AQUACEL™ Extra™

Order AQUACEL® Extra™ dressings now

Description	Pack size	Product code	NHS Code	PIP Code
AQUACEL Extra				
AQUACEL Extra dressing 5cm x 5cm square	10	413566	ELY377	367-3282
AQUACEL Extra dressing 10cm x 10cm square	10	413567	ELY378	367-3290
AQUACEL Extra dressing 15cm x 15cm square	5	413568	ELY379	367-3308
AQUACEL Extra dressing 4cm x 10cm rectangular	10	413569	ELY489	382-4760
AQUACEL Extra dressing 4cm x 20cm rectangular	10	413598	ELY490	382-4778
AQUACEL Extra dressing 4cm x 30cm rectangular	10	413599	ELY491	382-4786
AQUACEL Ribbon				
AQUACEL Ribbon dressing 1cm x 45cm	5	420127	ELY368	361-5978
AQUACEL Ribbon dressing 2cm x 45cm	5	S7503	ELY013	240-8565

1. Tomasi J, Claude Y, Lucas A. The partner study: first results of two synergistic dressings in the management of acute and chronic wounds in community setting. WUWHs. 2020.
2. Carrere C et al. Community Setting Survey Evaluating AQUACEL® Dressings. Journal of Wound Care VOL 30, NO 9. 2021 Sep 2;30(9):763-774.
3. Moore PJ, Foster L. Cost benefits of two dressings in the management of surgical wounds. Br J Nurs. Sep 28-Oct 11 2000;9(17):1128-32. doi:10.12968/bjon.2000.9.17.5464.
4. Harding KG, et al. Cost and dressing evaluation of Hydrofiber and alginate dressings in the management of community-based patients with chronic leg ulceration. Wounds 2001; 13(6):229-36.
5. Bowler PG, Jones SA, Davies BJ, Coyle E. Infection control properties of some wound dressings. J Wound Care. 1999;8(10):499-502.
6. Hoekstra MJ et al. A histological comparison of acute inflammatory responses with a Hydrofiber or tulle gauze dressing. J Wound Care 2002; 11(3): 113-17.
7. Barnea Y, Amir A, Lesham D et al. Clinical comparative study of Aquacel® and paraffin gauze dressing for split-skin donor site treatment. Ann Plast Surg. 2004;53(2):132-136.
8. Tickle J. Effective management of exudate with AQUACEL Extra. Br J Comm Nurs. 2012. 17:9(S38-46).
9. Bydesignhttps://www.tencel.com/true-carbon-zero
10. Walker M, Bowler PG, Cochrane CA. In vitro studies to show sequestration of matrix metalloproteinases by silver-containing wound care products. Ostomy/Wound Management, 2007, 53(9): 18-25.
11. Clarke JV, Deakin AH, Dillon JM, Emmerson S, Kinninmonth AWG. (2009). A prospective clinical audit of a new dressing design for lower limb arthroplasty wounds. Journal of Wound Care, 18(1), 5-11.
12. Waring MJ, Parsons D. (2001) Physico-chemical characterisation of carboxymethylated spun cellulose fibres. Biomaterials. 2001;22(9):903-912. Waring and Parsons, 2001.
13. Coutts P and Sibbald R. The effect of a Silver containing Hydrofiber® dressing on superficial wound bed and bacterial balance of chronic wounds. Int Wound J 2005; 2:348-356.
14. Preliminary assessment of the physical properties of AQUACEL® EXTRA vs AQUACEL® & DURAFIBERTM. Scientific Background Report. WHRI3461 TA214. 2011,Data on File, ConvaTec Inc.
15. WhiteR.Wounddressingsandothertopicaltreatmentmodalitiesinbioburdencontrol.JournalofWoundCare.2011;20(9):431-439.
16. Drew P, Posnett J, Rusling L, on behalf of the Wound Care Audit Team. The cost of wound care for a local population in England. Int Wound J 2007;4:149-155.
17. GuestJF,etal.BMJOpen2020;10:e045253.doi:10.1136/bmjopen-2020-045253.

© 2023 ConvaTec®/™ indicate trademarks of the ConvaTec group of companies. AP-57010-GBL-ENG-v1



Visit www.convatec.com for more information